

GENERAL INFORMATION

1. Location: 201 Talbot Ave. Cambridge, Maryland

2. Building Use Group (IBC): A-3 Assembly

3. Categories of Work (MBRC) Classified as "Modifications" Chapter 4

GENERAL CONTRACTOR

Willow Construction
400 Maryland Ave.
Easton, Maryland 21601
Phone: 410-822-6000

ARCHITECT

ATELIER 11, LTD
13 South Aurora Street
Easton, Maryland 21601
Phone 410-822-3680
Fax 410-819-0005
Email: Idatelier11@goeaston.net

DRAWING INDEX

Sheet C Cover and Site Plan
 Sheet A-1.1 Key Plan, Corridor, and Kid Zone Detail
 Sheet A-1.2 Specifications
 Sheet A-1.3 VCT Pattern Layout

Sheet A-2.1 Interior and Exterior Elevations
 Sheet A-5.1 Interior Elevations and ADA
 Sheet A-5.2 Interior Elevations and Details
 Sheet A-6.1 Record Document Photo
 Typical Door Construction

STRUCTURE NOTE

In any rehabilitation of an existing structure unusual conditions may arise and only be revealed during construction. Unusual conditions will be evaluated to determine the level of impact on life safety and the appropriate measures implemented to stabilize or improve the condition.

RECORD DOCUMENT GENERAL NOTE

All plans and elevations are drawn showing walls plumb and roof and floor level and does not indicate settlement or any deterioration. Dimensions in the Contract Documents may vary from existing. The General Contractor is responsible for site verifying all areas affected by construction.

CONTRACT DOCUMENT NOTE

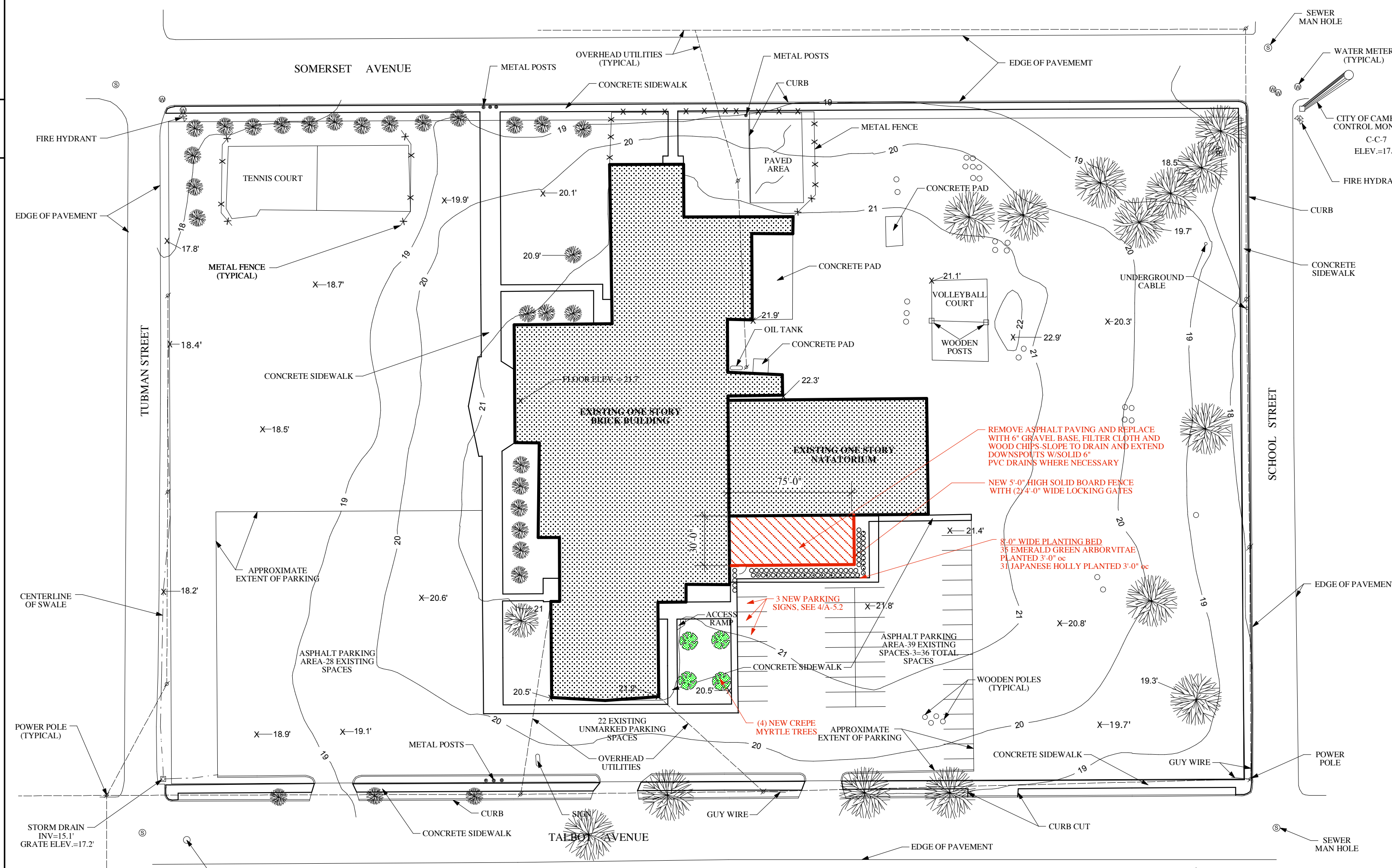
The Contract Document with the most current date or dates represents the latest information available and supersedes and replaces, all previous documents, drawings, details, information, and features unless specifically stated in writing by Atelier 11, Ltd. Upon receipt, the General Contractor is responsible for distribution of the most current documents to all of his subcontractors and applicable personnel.

Notice to Contractors

All Contractors and/or their Subcontractors performing the work on the project premises shall be responsible for initiating, maintaining, and supervising a reasonably prudent safety program including, but not limited to the isolation of work areas and the prompt removal of any debris or tools, which might endanger other workers and/or occupants.

ABBREVIATIONS

@	AT OR AT EACH	LAV.	LAVATORY
A.C.	AIR CONDITIONER	LT.	LIGHT OR LIGHTING
A.F.F.	ABOVE FINISHED FLOOR	LB.	POUND
ALUM.	ALUMINUM	MAS.	MASONRY
ALT.	ALTERNATE	MAX.	MAXIMUM
ANOD.	ANODIZED	MECH.	MECHANICAL
BD.	BOARD	M.O.	MASONRY OPENING
BLDG.	BUILDING	MTL.	METAL
BOT.	BOTTOM	MIN.	MINIMUM
B.S.	BOTH SIDES	M.S.	MOP SINK
B.V.	BLOCK VENT	W.R.	WATER RESISTANT
C	CENTER LINE	N.I.C.	NOT IN CONTRACT
CAB.	CABINET	NO.	NUMBER
CBT.	CARPET	O.C.	ON CENTER
[CHANNEL	OPG.	OPENING
CLG.	CEILING	OPP.	OPPOSITE
CLOS.	CLOSET	O.H.	OVERHEAD
C.T.	CERAMIC TILE	PTD.	PAINTED
COL.	COLUMN	PLAS.	PLASTER
CONC.	CONCRETE	P. LAM	PLASTIC LAMINATE
CONT.	CONTINUOUS	PL	PLATE
C.M.U.	CONCRETE MASONRY UNIT	P.T.	PRESSURE TREATED
C.J.	CONSTRUCTION JOINT	PVB.	POLYVINYL BARRIER
CSK.	COUNTERSINK	R	RADIUS
D	DEPTH	RM.	ROOM
DBL.	DOUBLE	REF	REFER, REFERENCE
DET.	DETAIL	REQ'D	REQUIRED
DIA.	DIAMETER	RES.	RESILIENT
ø	DIAMETER	REV.	REVERSE
DR.	DOOR	S.S.	STAINLESS STEEL
D.S.	DOWNSPOUT	RM.	ROOM
D.W.	DISHWASHER	R.O.	ROUGH OPENING
D.H.	DOUBLE HUNG	S.C.	SOLID CORE
DWG.	DRAWING	SCHED.	SCHEDULE
E.J.	EXPANSION JOINT	SHT.	SHEET
ELEV.	ELEVATION	SIM.	SIMILAR
ELEC.	ELECTRICAL	SQ.FT.	SQUARE FEET
EPS.	EXPANDED POLYSTYRENE	SPEC.	SPECIFICATION(S)
EQ.	EQUAL	STD.	STANDARD
E.W.	EACH WAY	STL.	STEEL
EXP.	EXPANSION	STOR.	STORAGE
FIN.	FINISHED	STRUCT.	STRUCTURAL
F.P.	FIREPROOF	T.	TREAD OR TOE
F.D.	FLOOR DRAIN	TEMP.	TEMPERATURE
FLG.	FLOORING	T&G	TONGUE AND GROVE
FT.	FOOT/FEET	THRESH.	THRESHOLD
FTG.	FOOTING	TYP.	TYPICAL
F.P.H.B.	FROSTPROOF HOSE BIB	UL	UNDERWRITERS LABORATORY
GA.	GAUGE, OR GAGE	W.C.	WATER CLOSET
GL.	GLASS	W.P.	WATERPROOF
G.S.	GRAVEL STOP	WDV.	WINDOW
GVB	GYPSUM WALL BOARD	WD.	WOOD
HT.	HEIGHT	W/	WITH
H.W.	HOT WATER	VVWF	WELDED WIRE FABRIC
H.W.H.	HOT WATER HEATER		
I.D.	INSIDE DIAMETER		
INSUL.	INSULATION		
LAM.	LAMINATED OR LAMINATE		

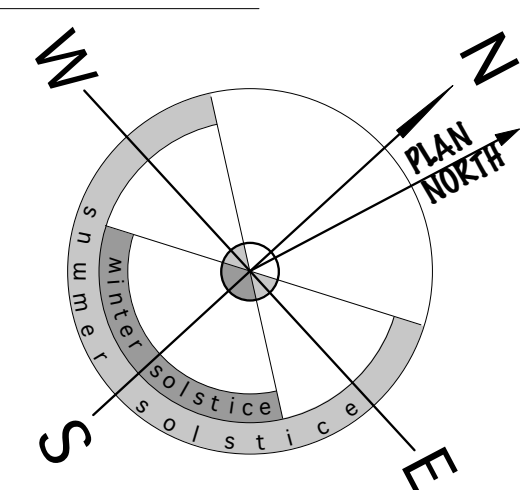


SURVEYOR'S CERTIFICATE:
 I CERTIFY TO THE DORCHESTER COUNTY FAMILY YMCA THAT THIS PLAN WAS MADE FROM NOTES OF A PRECISE FIELD SURVEY, SUBJECT TO THE NOTES HEREON, AND IS ACCURATE TO THE BEST OF MY KNOWLEDGE, INFORMATION AND BELIEF.

WILLIAM C. CRAIG DATE

NOTES:

- (1) ELEVATIONS SHOWN HEREON ARE BASED THE CITY OF CAMBRIDGE DATUM, USING CAMBRIDGE CONTROL MONUMENT #C-C-7, ELEVATION 17.93 FEET.
- (2) THIS PLAN DOES NOT REPRESENT AND IS NOT INTENDED FOR USE AS A BOUNDARY SURVEY.
- (3) UTILITIES SHOWN HEREON ARE BASED ON ABOVE GROUND EVIDENCE. UNDERGROUND UTILITIES WERE NOT LOCATED AND ARE NOT SHOWN ON THIS PLAN.



SYMBOL LEGEND

- ① DOOR NUMBER
- ⬡ WINDOW LETTER
- ⊖ ELEV. -4" LEVEL LINE
- ⚠ BUILDING SECTION DESIGNATION REFERENCE DRAWING NUMBER
- ⓪ DETAIL NUMBER REFERENCE DRAWING NUMBER
- Ⓛ INTERIOR ELEVATION NUMBER REFERENCE DRAWING NUMBER
- · — · — HIDDEN LINE-EXISTING CONDITION ABOVE OR BELOW SECTION CUT
- — — — — MATCH LINE
- · — · — HIDDEN LINE ABOVE OR BELOW SECTION CUT
- — — — — CENTER LINE
- ② REVISION (DATE OF REVISION) DAY/MONTH/YR.

MATERIALS LEGEND

- BRICK
- GRAVEL
- CONCRETE
- CMU
- EARTH OR FILL
- INSULATION (LOOSE OR BATT)
- EXISTING WALL
- NEW PLUMBING WALL
- NEW WOOD FRAME WALL
- PLASTER OR GYPSUM WALL BOARD (IN SECTION)
- PLYWOOD
- REINFORCING
- WOOD (BLOCKING)
- WOOD (FINISHED)
- WOOD (FRAMING)
- STEEL

PROFESSIONAL CERTIFICATION

I certify that these documents were prepared or approved by me, and that I am a duly licensed architect under the laws of the State of Maryland, license number 10465, license issued March 1996.

Lauren B. Dianich
 Atelier 11, Ltd.

CODES COMPLIANCE

- Annotated Code of Maryland.
- COMAR, Code of Maryland Regulations, latest edition.
- Md. Building Rehabilitation Code, MBRC. Reconstruction.
- International Building Code, IBC 2000 edition, as amended by COMAR 05.02.07.
- The National Electric Code, 1996 edition, as required by Article 38A, §60.
- International Mechanical Code as amended by COMAR 09.15.05.
- The National Standard Plumbing Code, as amended by COMAR 09.20.01.
- Energy Conservation based on portions of IBC concerning energy conservation standards.
- Fire Code based on COMAR 29.06.01 and Article 38A, Annotated Code of Md.
- Town of Easton Zoning Ordinance and amendments, latest edition.
- Easton Historic Districts Commission Guidelines, latest edition.

11
 13 south aurora easton, maryland 21601-3616

Atelier 11, Ltd.

jon e. brathwaite associate AIA
 lauren b. dianich, AIA

(410) 822-3680

Construction Set

Architectural Seal
 Use only scaled drawings for construction. Do not build with drawings missing architectural seal

Phase One Improvements
 Cover Sheet and Site Plan

These drawings, design, and construction features disclosed are proprietary to Atelier 11, Ltd. and shall not be reused in whole or in part without the express written permission of Atelier 11, Ltd.
 COPYRIGHT © 2006
 DRAWN BY: sar
 JOB # 0609

Dorchester Family YMCA
 201 Talbot Ave.
 Cambridge, Maryland

October 31, 2006
 SCALE: 1" = 50'